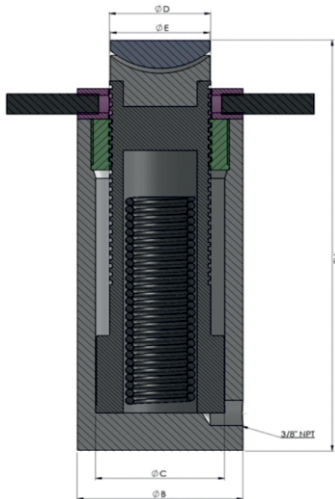


PTS-S

Planet Threaded Ram along with safety Lock Nut Spring Return – Single Acting Spherical Saddle



APPLICATION

These jacks are ideally used for Lifting of Girders, Building Foundations, Handling of Heavy Duty Machineries, Steel Fabrication, Ship Building, Testing of Concrete Structures, etc.

FEATURES /ADVANTAGES

- Cylinder is honed to a surface finish of 0.5 microns.
- Load return. Single acting, Threaded Ram, Safety Lock Nut. Alloy steel heat treated.
- At the bottom holes are provided to Fix.
- High pressure seals for better life. Ram wiper protects entering dirt and foreign material into the cylinder which extends cylinder life.
- Long lifting handles are provided for easy lifting at site.
- Connection Port 3/8" NPT.
- Spherical Saddle reduces damage to jack against off-centre load.



PTS-S Series - **P**: Planet, **T**: Threaded Rod, **S**: Spring Return, **S**: Spherical saddle, **10**: Capacity - ton, **150**: Stroke - mm

Model	Cap in (ton)	Cap. in (kN)	Stroke in (mm)	"A" Close Height	Effective Area in (cm ²)	Oil Cap in (cc)	"B" Cyl. OD	"C" Cyl. Bore ID	"D" Rod dia.	"E" Saddle dia.	wt. App in (kg)
PTS-S 10 - 150	10	111	150	255	15.9	239	60	45	40	35	4.5
PTS-S 15 - 150	15	167	150	265	23.8	356	70	55	50	40	7
PTS-S 20 - 150	20	218	150	275	31.2	468	80	63	55	50	9.2
PTS-S 25 - 150	25	270	150	285	38.5	577	90	70	55	50	12
PTS-S 30 - 150	30	309	150	290	44.2	663	100	75	60	55	15.2
PTS-S 50 - 150	50	550	150	305	78.5	1178	130	100	80	75	27.4
PTS-S 75 - 150	75	792	150	320	113.1	1696	155	120	95	90	40
PTS-S 100 - 150	100	1077	150	325	153.9	2309	180	140	110	105	55.5
PTS-S 150 - 150	150	1589	150	350	227.0	3405	220	170	140	135	90
PTS-S 200 - 150	200	2199	150	365	314.2	4712	255	200	160	155	125.5
PTS-S 250 - 150	250	2661	150	385	380.1	5702	280	220	180	175	160
PTS-S 300 - 150	300	3167	150	405	452.4	6785	310	240	200	190	209
PTS-S 400 - 150	400	4008	150	445	572.6	8588	350	270	220	210	294
PTS-S 500 - 150	500	4948	150	465	706.9	10603	400	300	250	230	405

- Specifications are subject to change due to continual improvement.
- Higher capacity and customized solution on request.
- Capacity and Stroke specified are maximum safe limits. Use at 80% of rating as safe practice.

